

9B Edith Terrace, - London
- £3,400



BEAUFORT GREEN

263 New Kings Road
Fulham
London
SW6 4RB

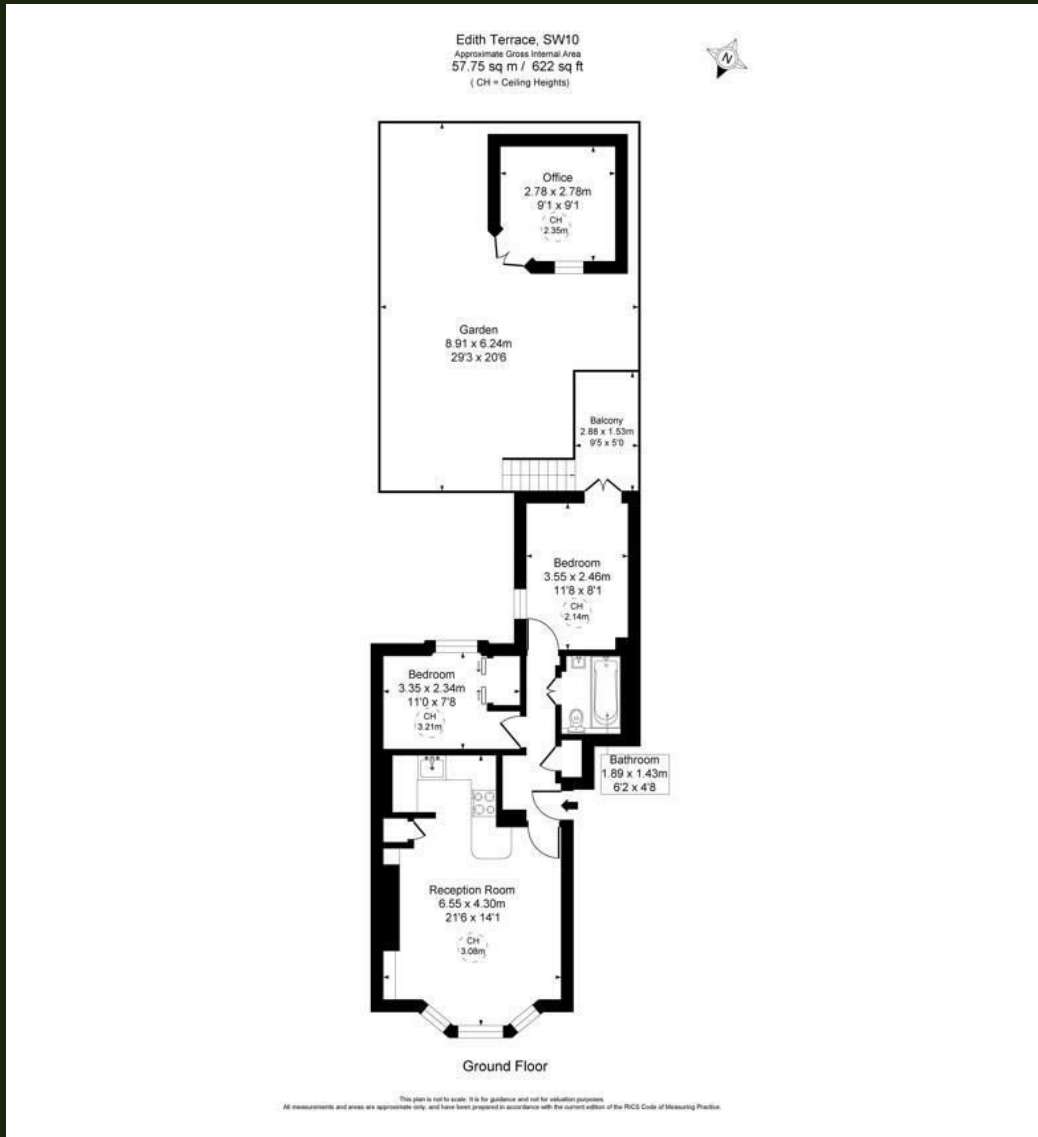




The Details

sq ft

2 Bedroom | 1 Bathroom | 1 Reception |



Situated in the heart of Chelsea, this well-maintained two-bedroom apartment occupies the raised ground floor of an attractive period building. Finished in neutral tones throughout, the property features a spacious reception room with high ceilings, wooden flooring, a decorative fireplace, and a large bay window that allows for plenty of natural light.

Both double bedrooms are positioned at the rear of the apartment, enjoying a desirable south-facing aspect and views over the private patio garden. The principal bedroom also benefits from direct access to the patio.

Ideally located, the apartment is within easy reach of the wide selection of cafés, restaurants, and boutiques along the renowned King's Road and Fulham Road. Available immediately.